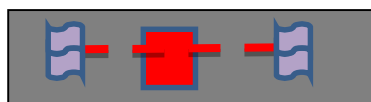
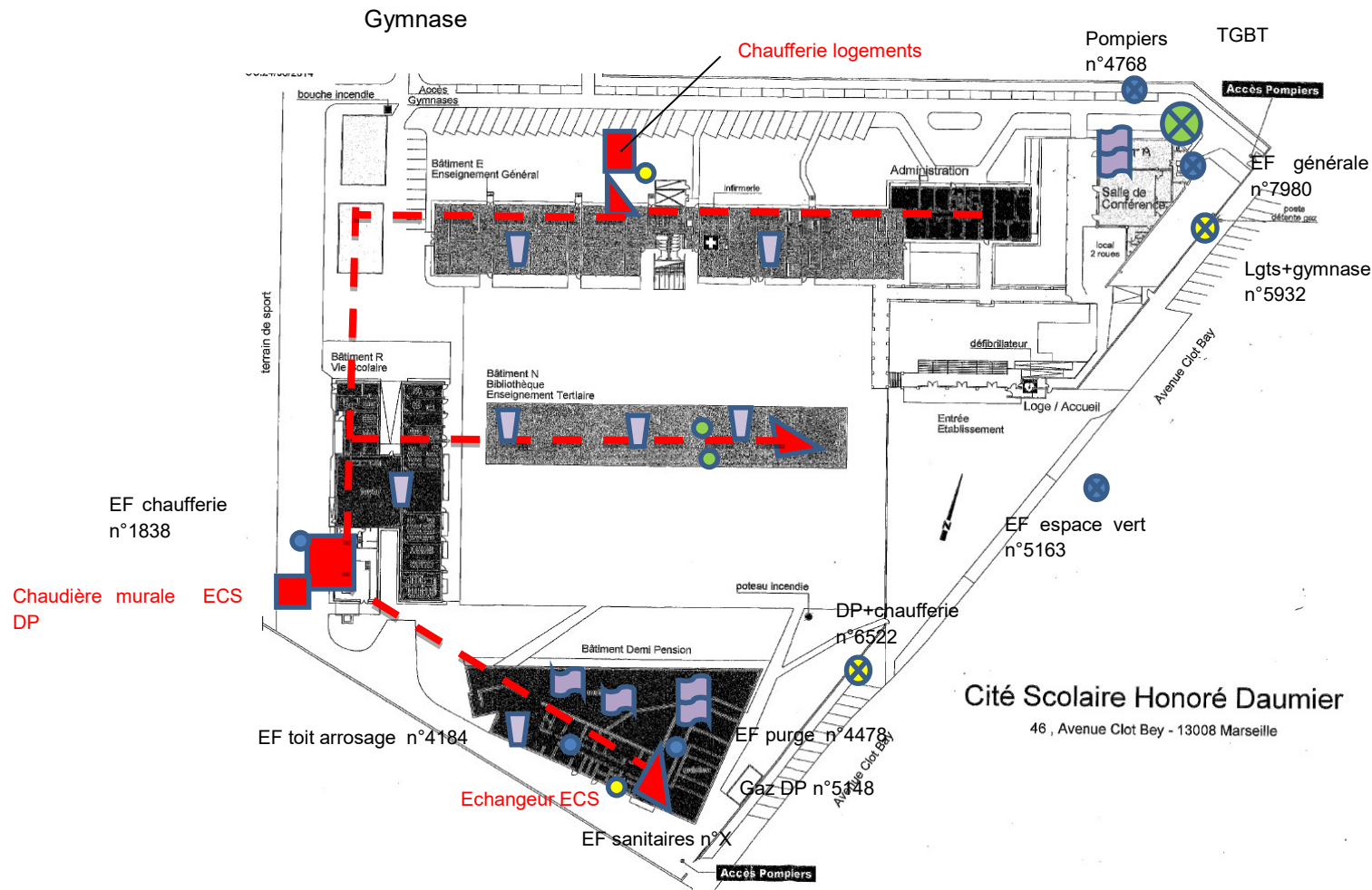


EQUIPEMENTS CHAUFFAGE et VENTILATION et COMPTEURS FLUIDES






4 aérothermes indépendants
6 radiants gaz
1 STYX ECS HS







CHAUFFAGE

-  Chaufferie
-  Sous Station
-  Réseaux Primaires


VENTILATION

-  CTA double flux
-  UTA/ CTA simple flux
-  Caisson extraction

COMPTEURS/SOUS COMPTEURS

-  EAU
-  ELECTRICITE
-  GAZ / FIOUL
-  ENERGIE/ CAL

ENERGIES RENOUVELABLES

-  Solaire Thermique
-  Solaire PV
-  Chaufferie bois

LYCEE DAUMIER – MARSEILLE (13)